



Contents

目录

企业国际交流会	
企业荣誉	
ZKG-3500/6500/9000 真空定量灌装机	07
2JG-7200 机械定量灌装机	09
DG-Q02/YG-30 气动定量灌装机/液压灌装机	11
GN-1200I 高速扭结机	13
GN-1200II 高速扭结机	15
GN-1200III 高速扭结机	17
GJ-1000 高速剪节机	19
GQC-3000 滚筒剪肠机	21
ZX 扎线机	23
CSK-15/18 机械长城双卡封口机	25
机械长城双卡封口机	27
JLSK-2 机械铝丝双卡封口机	29
立式大肉块灌装机/气动肉填充机	31
气动拉伸单卡封口机/U型手动打卡机	32
去筋膜机/鲜肉切丝切片机	33
切肉机/铝卡、铝丝	34
烟熏炉系列	35
GR-60-3500 真空滚揉机系列	37
上料机	38
GR-1700II/2500II/3500II 可翻转式真空滚揉机/真空制冷滚揉机	39
ZN-50 ZN-74 HDJ-656 盐水注射机系列/自动断筋机	41
手动盐水注射机 盐水制备器	42
ZN-120 ZN-236 盐水注射机	43
ZB-20-550 斩拌机系列	45
JB-60-1200 普通搅拌机系列	47
ZKJB-60-2500 真空搅拌机系列/真空制冷搅拌机系列	49
QK-2000 冻肉切块机	51
QK/P600C 冻肉切块/切片机	53
QPJR-250 冻肉切片绞肉机(一体机)	55
DRQD-350-450 冻肉切丁机	57
QD-01/03 QK-300/400 切丁机 切块机	59
QD-02 切丁机 切块机	61
QKJ-I/II 切片破碎机 锯骨机	63
JR-D120/140/250/300 冻肉绞肉机系列	65
DJ-150/400/600 打浆机	67
JXW-200 JXW-210 SZT-01 包心丸子机/狮子头丸子机	69
T-200/YT-200 提升机系列	71
YC-200 标准料车	72
SXJ-35 自动上料机	73
灌肠案板	74
蒸煮锅	74
N-2000/Q-2000 嫩化机/切片机	75

Company Profile

Helper Company International Exhibition
Helper Company Honour

ZKG-3500/6500/9000 Vacuum Filler	07
2JG-7200 Mechanical Filling Machine	09
DG-Q02/YG-30 Pneumatic filling machine/Hydraulic Filling Machine	11
GN-1200I High Capability Twisting Machine	13
GN-1200II High Capability Twisting Machine	15
GN-1200III High Speed Twisting And Automatic Hang Intestinal Machine	17
GJ-1000 High Speed Scissor Machine	19
GQC-3000 Roller sausage cutter	21
ZX Sausage Binding Machine	23
CSK-15/18 Mechanical Great Wall Double Clipping Machine	25
Mechanical Great-wall Double Clipping Machine	27
JLSK-2 Mechanical Aluminum Wire Double Clipping Machine	29
Tower meat filling machine	31
Pneumatic meat filling machine	31
Pneumatic stretching single clipping machine	32
Manual U-shape Clipping Machine	32
Fascia Removal Machine	33
Fresh Meat Stripper And Slicer	33
Multi-functional Meat Cutter /Aluminum Clip And Aluminum Wire	34
QZX Smoke House Series	35
GR-60-3500 Vacuum Tumbler Machine Series	37
Lifter for vacuum tumbler	38
GR-1700II/2500II/3500II Vacuum tumbler	39
Saline injection machine series	41
Automatic tenderizing machine	42
ZN-120 ZN-236 Saline Injecting Machine	43
ZB-80/125/200/330 Bowl Cutter Series	45
JB-60/150/400/650/1200 Mixer Series	47
Vacuum meat mixer series/Vacuum cooling mixer series	49
QK-2000 Frozen Meat Cutting Machine	51
QK/P600C Frozen Meat slicer/Cutter	53
QPJR-250 Slicing And Grinding Machine	55
Frozen meat dice	57
Dicer/Multi-functional meat cutter	59
Multi-functional meat cutter	61
QKJ-I/II Rib Chopper Series	63
Bone saw	63
JR-D 120/140/250/300 Frozen Meat Grinder Series	65
Beating machine	67
JXW-200/JXW-210/SZT-01 Stuffed Meatball Machine	69
T-200/YT-200 Lifter Series	71
YC-200 Standard Material Truck	72
SXJ-35 Automatic Stuffing Machine	73
Sausage Board/Braiser And Boiler	74
N-2000/Q-2000 Tenderizing Machine/Slicer	75



Company Profile

打造航母企业,做国际知名品牌。
以人为本,以诚立业,以科技求发展,以市场求生存,以顾客满意为目标。

企业简介

河北汉普创制机械有限公司

河北汉普创制机械有限公司成立于 2003 年（原石家庄市汉普食品机械有限公司，于 2015 年 1 月正式更名），为汉普集团旗下的独立子公司。是中国最早从事肉食品加工机械集研发、生产、销售和服务为一体的现代化企业。

河北汉普创制机械有限公司坚持以品质和服务取胜，了解客户、通悟产品，采取差异化的竞争策略，专注于高性能、高品质肉食品加工机械领域。专业从事肉制品加工成套设备、速冻火锅料加工成套设备、休闲食品加工成套设备等。产品主要包括：冻肉切块机系列、冻肉绞肉机系列、斩拌机系列、搅拌机系列、盐水注射机系列、滚揉机系列、烟熏炉系列、灌装机系列、打卡机系列等几十种设备，与双汇集团、金锣集团、喜旺集团、青岛波尼亚……等企业建立长期合作的关系，确立了公司在国内食品机械行业的领先地位。目前公司已经是中国食品机械行业十大品牌、中国肉类工业影响力品牌、中国肉类食品行业强势企业、中国食品和包装机械诚信单位。并通过 ISO9001-2008 国际质量管理体系认证和欧洲 CE 认证，并拥有多项国家专利。

强大的技术力量，精湛的工艺，认真的工作态度，完善的售后服务，使公司产品不仅遍布全国，还远销北美、南美、东南亚、中东、欧洲、非洲等地区。

现代化的管理模式，员工团结向上的精神风貌，孜孜不倦的敬业精神，是企业发展的有力保障。

我公司视质量如生命，视用户为上帝，必将以优异的产品质量，完善的售后服务，为我国食品加工等行业的迅速发展贡献力量。

汉普机械，中国创制！

PO1 / PO2



Company Profile

Hebei Helper Machinery Manufacturing CO.,LTD, an independent subsidiary of Helper Corporation group, was established in 2003 (former as Shijiazhuang Helper Food Machinery Co.,Ltd.officially had its new name in January 2015). As one of the earliest enterprises specializing in meat food processing machinery, Hebei Helper Machinery Manufacturing Co., Ltd integrates research and development, production, sales and service in the modern management system.

The company has been obtained success through the persistence of quality and service, as well as by knowing customers, understanding products, implementing diversification competitive strategy and focusing on high quality and good performance in meat food machinery. The company business covers the industries of meat processing equipment, quick-frozen hotpot food production line, leisure food equipment etc. Our company has now set up scores of equipment used in the field of meat processing such as frozen meat block cutting-off series, meat block grinder series, cutter and mixer series, saline injector series, rolling machine series, smoke oven series, filling machine series, clips tying machine series etc. By establishing long term cooperative relationship with customers such as Shuanghui group, Jinluo group, Siwin foods, Qingdao Bernia food Co., LTD etc., the leading position in domestic food machinery industry is confirmed. At present, our company has gained various honors and certifications such as top-10 famous brands in food machinery, the most influential brands in meat industry, The outstanding enterprises in meat food industry and Integrity unit of food and packing machines, the ISO9001-2008 international quality system certification, the European CE certification and many national patents.

Strong technical power, exquisite technics, serious working attitude, perfect after service, all of these make the reputation of Helper machinery spread broadly. The products are not only spread in whole country, but also exported to the America, southeast Asia, middle east, Europe and Africa regions and appraised highly by the customers.

Modernized managerial method, employee's united spirit, unwearied respecting occupation spirit, all of these are the forceful assurance for the enterprise's development.

Taking quality as life, taking customers as the God, with perfect quality and after service, our company will contribute most power to the rapid development in food processing industry in China.

Helper machinery, manufacturing in China!

Company International Exhibition

心无限 天地宽

BROAD HEART, GRAND VIEW.
HELPER MACHINERY

企业国际交流会……

打造航母企业,做国际知名品牌.

以人为本,以诚立业,以科技求发展,以市场求生存,以顾客满意为目标.



P03/P04





企业荣誉...

Company Honour 2003-2023

心无限 天地宽
BROAD HEART, GRAND VIEW. HELPER MACHINERY



ZKG-3500/6500/9000 vacuum filler

真空定量灌装机

本系列机型 3500/6500/9000 是真正集自动上料、定量灌装、高速扭结于一身的真空定量灌装机。采用叶片泵的灌装方式在真空状态下完成灌装过程，有效防止脂肪氧化，避免蛋白水解，减少细菌存活量，有效保证产品的保质期及产品的颜色鲜亮、味道醇正。是国内灌装机械中的最高端的产品之一。

The work efficiency is enhanced greatly by integrated with automatic feeding, quantitative filling and high-speed twisting. The filling process is completed under vacuum status which effectively prevent the fat oxidation and proteolysis, reduce the surviving bacteria and ensure the product's bright color and fresh flavor during the shelf life period. It is the top grade filling machine in China.

型号 (Model)	定量范围 (g) Portioning Range	直流量 (kg/h) Filling Capacity	料斗容积 (L) Hopper Capacity	总功率 (KW) Power	电压 (V) Voltage	重量 (kg) N.W	外形尺寸 (mm) Dimension
ZKG-3500	5-9999	3500	240	7.4	380	750	2210x1384x2140
ZKG-6500	5-9999	6500	240	9.7	380	1000	2210x1400x2140
ZKG-9000	5-9999	9000	240	10.6	380	1100	1450x1050x2100



1. 本机灌装、扭结均采用伺服电机驱动。配备的人机界面、伺服电机、减速机、PLC 控制器、真空泵等均采用国外知名品牌。
2. 本机具有高速自动扭结功能，适用于天然肠衣、蛋白肠衣、烟熏肠衣的产品。扭结速度根据产品和原料不同可无级调整。
3. ZKG 带有提升设备可自动上料，节省人力。
4. 正常糜状误差不得超过 $\pm 1.5g$ ，正常块状产品误差不得超过 $\pm 3g$ 。
5. 本机可根据产品特点加配专用快速打扭器，大大提高您的工作效率。
6. 扭结速度为无级调速。
7. 可与各种打卡机联机，实现自动化生产。

- 1.The filling and twisting are driven by servomotor.
- 2.The human-machine interface, servo motor, reducer and PLC controller and vacuum pump are all imported.
- 3.The lifting device save the labour.
- 4.The portioning error of meat paste is within $\pm 1.5g$, and meat block within $\pm 3g$.
- 5.The automatic twisting is applicable for various natural casing, collagen casing and smoked casing.
- 6.Working with clipping machine realized automatic production line.
- 7.The twisting speed is stepless speed adjustment.





2JG-7200 mechanical filling machine

机械定量灌装机

本机采用最新的机械灌装结构，整机外观整洁，与肉食接触部分及外包装全部采用不锈钢制造，易于清洗。操作方便、效率高，灌装精度更加准确、性能更加稳定可靠。本机改变了中国肉类行业无自主知识产权的机械灌装机的历史。

The machine adopted the update mechanical filling structure, with elegant and neat appearance. The parts contacting with meat and the outside structure are both made of stainless steel, so it is easy to clean. Convenient to operate and high efficiency. The filling precision is more accurate and performance is more stable and reliable. The machine has filled the vacancy that mechanical machine has no independent intellectual property in Chinese Meat Industry.

型号 (Model)	定量范围 (g) Portioning Range	直流量 (kg/h) Filling Capacity	料斗容积 (L) Hopper Capacity	总功率 (KW) Power	电压 (V) Voltage	重量 (kg) N.W	外形尺寸 (mm) Dimension
2JG-7200	5-9999	5500	180	3	380	600	1050x910x1620



- 1、可与本厂生产的双卡机配套使用，实现灌装、打卡一条线生产。
- 2、本机采用进口伺服电机控制。
- 3、本机肉粒、肉糜均可灌装。

- 1.Connected with double clipper realizes filling and clipping production line.
- 2.This machine is driven by imported servo motor.
- 3.Both for meat block and minced meat.





液压灌装机

DG-Q 02 / YG-30

Pneumatic filling machine/Hydraulic filling machine

气动定量灌装机 / 液压灌装机

气动定量灌装机是我厂自行研制开发的设备，此机体积小，投入低，适合灌装各种肠类、火腿类产品，适用于中、小型肉制品加工企业。该机采用计算机辅助设计，结构紧凑，设计合理。外形美观，小巧玲珑，与肉食接触部分及外包装全部采用不锈钢制造。操作简单，易于清洗。定量准确，误差不超过 ±3g。可与各种自动打卡机联机，实现自动生产。

The machine is developed independently with small volume and low price. It is suitable for various sausage and ham. It is applicable for medium and small-scale producers.

型号 (Model)	适用范围 Suitable product	定量范围(g) Portioning Range	使用气压(mpa) Pressure	工作速度(次/分钟) Working speed	电压(V) Voltage	重量(kg) N.W	外形尺寸(mm) Dimension
DG-Q02	可灌装肉糜和肉块、 松花蛋肠等产品	10-150 20-480 50-1000	0.5-0.6	30-50	220V 50VA	165	700x800x1600
YG-30	可灌装肉糜和肉块	/	/	/	380	360	950x700x1460

- 1.The machine is designed with adoption of CAD, which offers a compact structure and reasonable design;The dosing error is within ±3g.
- 2.The parts contacting with meat and the outside structure are made of stainless steel.
- 3.Working with clipping machine to realize an automatic production line.
- 4.Easy to operate and clean.



GN-1200I HIGH CAPABILITY twisting machine introduction

高速扭结机GN-1200 I 型

联机性能：本机可与任何有稳定、连续灌装能力的灌装机联机。

Connected Capability: This Machine Can Be Filling Connected With Any Filling Machine Which Has stable Fill Function.

显著优点：

- 1、扭结圈数可调；
 - 2、可变频调速；
 - 3、脚踏开始键即开始工作；
 - 4、肠衣扭结完后后可自动停止。
- 适宜生产：台湾烤肠、烧烤肠、亲亲肠、粒粒肠。

New features:

- 1、Twisting number of turns is adjustable.
 - 2、Speed controlled by frequency conversion.
 - 3、To push start button by knee.
 - 4、Autostop when casing used up.
- For: Taiwan roasted sausage. BBQ sausage, kiss sausage, capsule sausage, etc.

型号 (Model)	扭结速度 (cycle/min) Twisting Speed	扭结长度 (mm) Twisting Length	尼龙肠衣 (mm) Nylon	胶原蛋白肠衣 (mm) Collagen	设备功率 (Kw) Power	电源 (V) Voltage	重量 (Kg) N.W	外形尺寸 (mm) Dimension
GN-1200I	1200	30-180	25-46	13-30	2.6	380	500	1400x590 x1050



高速扭结机 GN-1200 I 型

GN-1200 II HIGH CAPABILITY twisting machine introduction

高速扭结机GN-1200 II 型

本机是我公司根据市场需求自主研发的新一代高速扭结设备。本产品实现了扭结管的自动切换，大大提高了产品的生产效率；在电器方面增加了 PLC 自动控制系统使操作更加人性化；工作速度切换采用变频调速高效节能；适用于蛋白肠衣、尼龙肠衣、具有可靠的定长功能；整机防水性强便于清洗。

The machine are developed by ourself ,which is new generation.its twisting tube can be changed self motion.PLC auto controlling system is more humanism,suit to protein and nylon casing ,have the function of fixing length.water proof.

联机性能：本机可与任何有连续灌装能力的灌装机联机。
工作方式：工作过程中套装肠衣，双管自动切换提高产量。

Connected Capability:The machine can be connected with any filling machine with a series production.
Work Mode:In the casing procession ,the double tube can be switch.

型号 (Model)	扭结速度 (cycle/min) Twisting Speed	扭结长度 (mm) Twisting Length	尼龙肠衣 (mm) Nylon	胶原蛋白肠衣 (mm) Collagen	设备功率 (Kw) Power	电源 (V) Voltage	重量 (Kg) N.W	外形尺寸 (mm) Dimension
GN-1200II	1200	30-180	25-46	13-30	4	380	600	1500x570x1500



高速扭结机 GN-1200 II 型

GN-1200 III

high speed twisting and automatic hang intestinal machine

GN-1200 III 型 高速扭结自动挂肠生产线



GN-1200 III 型高速扭结自动挂肠生产线



- 1、整机采用多台进口伺服系统控制，运动准确可靠。
- 2、设备自动化程度高，操作简单方便。
- 3、产品长度可在 30mm 以上任意可调，扭结圈数任意可调。
- 4、扭结速度快，最高可达 1600 份 / 分钟。
- 5、可实现天然肠衣，蛋白肠衣，纤维肠衣的高速扭结。
- 6、配合自动挂杆使用，可大大提高生产效率使企业减员增效。



- 1、The whole machine adopts imported servo control system, running accurate and reliable.
- 2、The automation degree is high, easy to operate.
- 3、The length of products can be adjusted above 30mm, and twisting laps is arbitrary adjustable.
- 4、The twisting speed is high, the maximum is 1600 pcs/min.
- 5、Available casing: natural casing, protein casing and fiber casing
- 6、The machine can use with automatic hang intestinal machine to increase production efficiency.

GN-1200 III 型高速扭结机参数 GN-1200III High speed twisting Machine

型号 (Model)	扭结速度 (pcs/min) Twisting Speed	扭结长度 (mm) Twisting Length	设备功率 (Kw) Power	电源 (V) Voltage	产品直径范围 Casing(mm)	外形尺寸 (mm) Dimension
GN-1200III	1600	30-180	7.2	380	14-35	2001x620x1204

挂肠机参数 Automatic hand intestinal Machine

挂杆悬挂单边最大长度 (mm) Maximum unilateral hang length	挂杆功率 (kw) Hanger power	挂杆尺寸 Hanger dimension(mm)
520	1.3	2595x630x1041

GJ-1000

high speed scissor machine

高速剪节机

型号 (Model)	分切速度 (pellet/min) Speed	产品最小长度 (mm) Least Length	肠衣直径范围 (mm) Diameter	设备功率 (Kw) Power	电源 (V) Voltage	重量 (Kg) N.W	外形尺寸 (mm) Dimension
GJ-1000	500-1600	25	Φ14-Φ33	3	380	300	1140x830x1350



性能介绍:

1. 速度快, 最高速可达 65m/min.
2. 位置准确, 驱动方式采用双轴伺服控制。
3. 适应面广, 可根据产品的直径、长度进行调整。
4. 具有定长切段功能。
5. 操作简单, 采用可编程方式控制, 触摸屏操作。
6. 安全、移动性能好。



Function:

- 1.High speed ,maximum 65m/min.
- 2.Exact position,driving by servo double axis.
- 3.Suit to large field,can be adjusted by diameter and length.
- 4.It has a function of cutting with fixed length.
- 5.Easy handle,controlled through the programme,operate with touch screen.
- 6.Safe and good mobility.



GQC-3000

Roller sausage cutter

滚筒剪肠机

型号 (Model)	生产能力 Productivity	产品长度 (mm) Product Length	肠衣直径范围 (mm) Diameter	设备功率 (Kw) Power	电源 (V) Voltage	重量 (Kg) N.W	外形尺寸 (mm) Dimension
GQC-3000	1-2t/h	20-130	Φ10-Φ50	1	380	1500	3170x1200x1550



性能介绍:

- 1、适用范围广，适合各种扭结类产品，如：蛋白肠衣、天然肠衣类产品。
- 2、设备使用方便，能耗低，生产效率高。
- 3、滚筒、绞龙均采用变频器控制，速度可调。
- 4、可根据产品的长度进行调整。
- 5、安全、移动性能好。

Performance introduction

- 1.Suitable to various twisting products,such as collagen casing,natural casing,etc.
- 2.Easy to use,low energy consumption with high efficiency
- 3.frequency convertercontrol of the roller and auger with adjustable speed
- 4.Can be adjusted by the product length.
- 5.Safe with good mobility performance



ZX Sausage cutter Binding Machine



扎线机

适用肠衣直径 Casing Diameter	单节肠长度 Single length of sausage	生产能力 Capacity	外形尺寸(L×W×H) Dimension	整机重量(kg) Weight
Φ9-36mm (任意可调)	20-180mm (任意可调)	约 530-850 节 /min	1075x780x1300mm	300kg



输送机

1. 扎线机是全自动双条香肠扎线，电机采用进口伺服电机驱动，配备的人机界面，伺服电机、PLC 控制器。
2. 机身采用全不锈钢制造，体积精致，效率高，易操作，节省肠衣，节省人工。
3. 产品长度可任意调节。
4. 结构简单，维修率低，可长时间连续工作不停机。
5. 产品饱满度，定量随意调整。

注：配灌装输送机操作百场人员容易上手，不需按传统灌肠手法，可直接上手操作。

- 1.The binding machine is an automatic production line with double tracks for sausages. It's driven by servo motor. Friendly HMI, PLC are equipped as well.
- 2.The whole line is made by S304 with compact body and high efficiency. It is easily operated to save labor. Casings will be saved magnificently with sausages bound by strings instead of casing being twisted.
- 3.Length of sausages can be adjusted according to your needs.
- 4.Brief instruction together with low repairment rates, the machine is quite popular among meat processing factories. It can work for a long time without stops.
- 5.Degree of contents and portion can be freely changed according to your needs.

Note:Filling conveyor machine can be equipped. Operating with filling conveyor facility makes putting sausages the only necessary work for workers, which is much different from traditional sausage filling methods.



CSK-15/18 MECHANICAL great wall double clipping machine

机械长城双卡封口机

本机是由伺服电机驱动，多种凸轮组合完成打卡功能，结构紧凑，传动可靠。机体选用优质铝合金、不锈钢材质制造，其主要零件及传动部件则采用不锈钢和优质钢材加工制造。整机的综合机械性能及耐腐蚀能力均能满足您生产的需要。

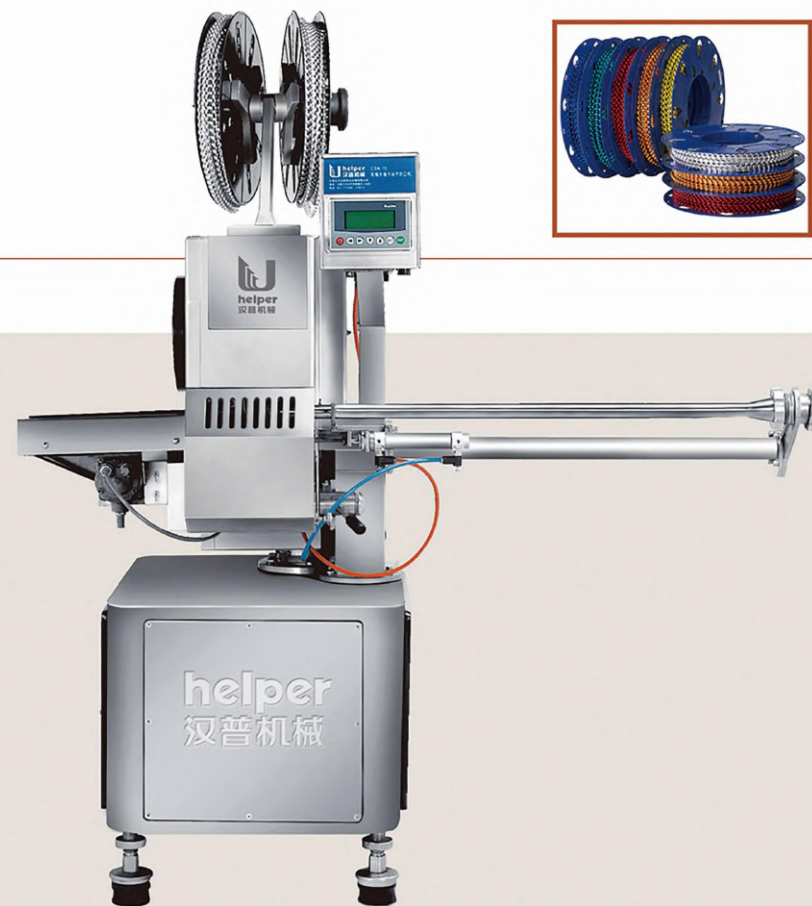
The machine is driven by servo motor Compact structure design and reliable running. Perfect stainless steel for main body, main part and driving part. The integrated mechanical property of complete machine can satisfy different requirement.

型号 (Model)	适用卡型 Clip Model	打卡速度 (time/min) Clip Speed	功率 (Kw) Power	电源 (V) Voltage	气源 (mpa) Air pressure	适用肠衣 (mm) Casing	耗气量 (m ³) Air consumption	重量 (Kg) N.W	外形尺寸 (mm) Dimension
CSK -15/18	长城铝卡	0-120 可调	2.7	单相交流 220±10% (伺服控制)	工作压力 0.5 ~ 0.6(裁刀用)	折径 30- 120/160	0.0064 (裁刀用)	760	760x750x1700

- 1、本机设计巧妙，结构紧凑，合理。长城卡扣型美观大方，使用产品档次高。
- 2、控制部分，伺服的采用的是人机界面、PLC 控制。
- 3、本机配有自动注油润滑系统，对设备的关键部件进行注油润滑，延长使用寿命。
- 4、本机具有自动计数裁断系统，裁刀为气动，裁切次数 0-9 次可调。
- 5、可与各种灌装机械实现自动化生产，是进口设备的替代产品。



- 1.Smart design and compact structure.
- 2.Elegant Great Wall clips make high grade appearance for clipping.
- 3.Clip speed: 0-120 times adjustable
- 4.Clip model available: Great Wall type
- 5.Flat width of casing available: 30mm-120mm
- 6.Control parts: Human-machine interface PLC.
- 7.Power supply: Single-phase alternating current 220V ± 10%(Servo motor)
- 8.Three-phase alternating current 380V ± 10%
- 9.Clip speed: 0-120 adjustable
- 10.Cut knife is driven pneumatically.
- 11.Frequency: 0-9 times.
- 12.Air source: Work pressure 0.5-0.6 mpa (Cut Knife)
- 13.Air consumption: 0.0064 mJ (Cut Knife)
- 14.Online with various stuffing filling machine to actualize automatic production line.
Best replacing product of imported equipment.



megreat-wall double clipping machine

机械长城双卡封口机

本机是我公司最新研发的高速封口机，采用伺服电机驱动，与国内同类产品相比有着工作速度更快，打卡冲击小，维护简便，防水能力强、便于清洗等优点。这些特点使得该设备具有稳定的工作能力，是进口设备的替代产品。

The machine our latest development of high speed clipping machine, driven by servo motor with faster speed. Stable work ability supplies a replacement of imported products.

型号 (Model)	适用卡型 Clip model	打卡速度 Clip speed	功率 (Kw) Power	电源 (V) Voltage	气源 (mpa) Air pressure	适用肠衣 (mm) Casing	耗气量 (m³) Air consumption	重量 (Kg) Weight	拉伸距离 (mm) Stretching distance	外形尺寸 (mm) Dimension
CSK-15II	长城铝卡	0-160	2.7	单相交流 220±10% (闭环控制)	工作压力 0.5-0.6 (裁刀用)	折径 30-120	0.01	630	36/60	1090x930x1900
CSK-18III	长城铝卡	0-100	2.7	单相交流 220±10% (闭环控制)	工作压力 0.5-0.6 (裁刀用)	折径 50-200	0.01	660	36-100 可调	1160x930x2020

1. 本机可与任何有稳定灌装、定量能力的灌装设备联机，完成打卡包装类产品的快速生产。
2. 配有自动计数裁断系统，裁刀为气动，裁刀次数 0-20 次可调。
3. 操作简单：本机机身旋转快捷，使用按钮操作，简单方便，大大减轻了工人的劳动强度。
4. 先进电控系统：本机采用了 PLC 控制，使得程序运行精确可靠，扩展升级能力更强。
5. 离效驱动方式：本机设计了适用于高速生产的连续工作方式，使得该设备能够在不停顿的情况下连续工作，同时也避免了因为频繁起停而造成的过度磨损，使设备的耐用性更强。
6. 简洁传动结构：本机设计巧妙，简化了很多零部件结构，并配有自动注油润滑系统，从而使设备工作时的冲击更小、噪音更低。
7. 低廉维修成本：本机独特的设计和工作方式，使得本机在全寿命期内维修率降低 40%，且维修方便快捷。



CSK-III

1. Easy connected with various stuffing filling machines to realize automatic production line of filling, sealing, and clipping.
2. Equipped with automatic counting cutting system by pneumatically cutting, about 0-20 times adjustable.
3. Easy operation: simple button handle to reduce labor intensity.
4. Advanced Electronic control system: Ensure reliable operation by PLC.
5. Efficient driving mode: continual work without stop, avoided the excessive wear caused by frequent start-stop.
6. Simple drive system: Automatic oiling lubrication system to make smaller impact and lower noise.
7. Low maintenance cost: Unique design and work mode reduces the maintenance rate in service life by 40%.



CSK-II



JLSK-2 MECHANICAL aluminum wire double clipping machine

机械铝丝双卡封口机

本机分为伺服电机控制单速与五级调速控制两种机型，是我厂投入巨资自行研发的机械传动结构的封口机，结构简单，故障率低，打卡速度快，成型效果好，并获得了多项国家专利，开创了肉类行业铝丝封口机的先河，结束了气动封口机高能耗的历史。

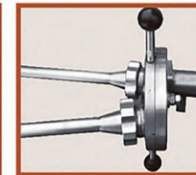
It is the simple mechanical drive structure clipping machine which is developed and researched independently, simple structure, low fault, high clipping speed, Well shaping effect that obtain many National patents.

型号 (Model)	打卡速度 (time/min) Clip speed	功率 (KW) Power	电源 (v) Voltage	适用肠衣 (mm) Casing	打卡中心距地面高度 (mm) Clip height	重量 (kg) N.W	外形尺寸 (mm) Dimension
JLSK-2 伺服调速	120 (五级调速)	2.7	220	折径 28-85	920-1000	800	1160x1470x1400

1. 本机采用可视控制，操作简单方便。
2. 本机有 16、19、21 三种规格的模具，更换简便，可选用 2.1、2.45、2.7、2.9 的铝盘丝。
3. 本机在不更换模具的情况下，根据产品需要自由更换不同规格的铝盘丝。
4. 可配双灌装管，大大提高了生产人员的工作效率。
5. 汉普机械铝丝双卡封口机（伺服）是国内速度最高的机械铝丝打卡机。
6. 本机配有自动注油润滑系统，对设备的关键部件进行注油润滑，延长使用寿命。
7. 本机具有自动计数裁断系统。
8. 本机可与各种灌装机连机形成自动化生产线。



1. Open a new era of mechanical aluminum wire in the range of clipping machine.
2. Ending the history of high energy consumption in the range of pneumatic clipping Machine.
3. Visual control, easy to operate and change mold.
4. Three kinds of mold available: 16, 19 and 21
5. Aluminum wire available: 2.1, 2.45, 2.7 and 2.9
6. Aluminum wire can be changeable according to specific requirement if the mold keep unchanged.
7. Laborsaving with be equipped with two filling tubes.
8. Quick speed can reach 84 Times/ Min, the production cost is reduced considerably.
9. Online with various stuffing filling machines to actualize automatic production line.
10. Automatic lubricating oil system to extend life time.
11. Automatic account and cutting system.



LQGS Tower meat filling machine

立式大肉块灌装机

整机采用 304 不锈钢材料制造, 清洁维护简单, 拆卸组装容易, 安全卫生、经久耐用。操作安全, 采用气动控制, 手掀开关罩控制开关, 压力调节装置, 调节产品饱满程度, 满足客户多样性需求, 模具可根据客户要求定做。适用于羊肉卷、猪肉卷、猪排、猪扒、牛排、颗粒肉肠等产品的肉类加工领域。

模具 (Φ): 70、80、90、100、110、120、140、(可根据客户要求制作)

型号 (Model)	气源要求 (MPa)	填充袋直径 (mm) Dcimeter of casing	料槽长度 (mm) Trough length	净重 (kg)	外形 (mm) Dimension
LQGS	0.4-0.6	70-140	600	165	1860x580x1430

- 1.The machine is made of 304 stainless steel,easy maintenance and repair. easy assembly and disassemble.
- 2.Operation safety,pneumatic control and hand to open the switch cover control switch.
- 3.Pressure adjust device.adjust the filling plumpness,satisfy the different customs demand.
- 4.Suitable for mutton processing in mutton rolls,pork chops,steaks, granules and other products.



GS-00 Pneumatic meat filling machine

气动肉块填充机

QGS-00 气动肉块填充机是我公司最新研发的肉块填充机, 与国内同类产品相比有着工作速度快, 维护简便, 便于清洗, 气动控制安全卫生等诸多优点。本机可对体积较大的肉块进行填充灌装, 与气动拉伸打卡机配合使用可更好的提高产品状态。



型号 (Model)	填充量 (kg)	使用肠衣折径 (mm) Casing	气压 (Mpa) Air pressure	外形尺寸 (mm) Dimension
QGS-00	0.5-5	130-230	0.2-0.6	1860 x 315 x 255

QGS-00pneumatic meat filling machine is our latest meat filling machine With the advantage of high working speed,easy maintenance and clean.pneumatic control and In accordancewith national food and health standard.this machine can fill big size of meat blocks.it canwork with our pneumatic stretching clipping machine to improve producl condition.

LQDK Pneumatic Pneumatic stretching single clipping machine

气动拉伸单卡封口机

该机为气动拉伸单卡机。使用 74 大、74 小 U 型铝卡。操作简单、高效、省力。肠衣拉紧程度可调, 可保证火腿的充实、饱满、切片效果好。封口力强, 密封性好。

型号 (Model)	使用肠衣折径 (mm) Casing	气压 (Mpa) Air pressure	重量 (kg) N.W	外形尺寸 (mm) Dimension
LQDK	120-250	0.6-0.8	35	800x580x480

- 1.This machine uses 74L and 74S U-Shape clips, can achieve clip typing to ham,sausage with sausage casing and soft packaging for porridge-shaped product.
- 2.Flat width of casing available:120mm-250mm
- 3.Easy to operate, highly effective and laborsaving.
- 4.The stretching degree of the sausage case can be adjustable, which ensures the ham to be full, round and in excellent effect of slicing.
- 5.The machine offers perfect ability of clipping and sealing.



MANUAL U-SHAPE Clipping machine

U型手动打卡机

肠衣折径 (mm) Casing	卡扣规格 (mm) Clip model	重量 (kg) N.W	外形尺寸 (mm) Dimension
35-200	501, 502 503, 506	15	400x200x670

Flat diameter of casing available:35mm to 200mm.
U shape clip available: 501,502,503 and 506
Dimensions(mm):LxWxH=400x200x670



HQM-460 Fascia removal machine

去筋膜机

1. 本机适合各种类型肉类食品加工厂、生排加工厂、肉类精加工厂的工业化生产要求。
2. 高精度输送辊在使用过程中产生的损耗小。
3. 可以根据筋膜的薄厚调整刀片间的间隙。
4. 符合人体工程学的脚踏式开关，操作便捷。

型号 Model	切削速度 Cutting speed	处理厚度 Machinable thickness	功率 Power	气压 Air pressure	电压 Voltage	重量 Weight	外形尺寸 Dimension
HQM-460	37m/min	0.2-0.5mm	1.1kw	0.6-0.8MPa	380V	160Kg	710x750x900mm



HQS-1200 Fresh meat stripper and slicer

鲜肉切丝切片机

1. 切片机采用 SUS304 不锈钢制成，此机能够缩短加工时间，提高产品效率。
2. 刀辊可方便的拆下清洗；方便清洗结构紧凑，设计新颖，拆装方便，便于清洗。

型号 Dimension	电压 Voltage	功率 Power	产量 Capacity	刀组数 Group of knife	刀组规格 Spec of knife	净重 Weight	外形尺寸 Dimension
HQS-1200	380V	1.5Kw	1200Kg/h	2组	3-30mm	105Kg	620x565x956mm



LC-340 Multi-functional meat cutter

切肉机

本机采用输送带进料、出料。产品切割整齐，方便操作，能实现产品快速包装。
 整部机体采用优质不锈钢制作，钢板厚度3mm；
 采用优化防水卫生设计，可以直接用清水清洗；
 机器刀片为不锈钢材料，特殊淬火工艺；
 利用锋利刀片将鲜肉第一次开条、第二次切块，
 对于切割条、块形状效果非常好。
 切割速度快，成型效果好；
 快拆式刀组设计，更换刀组可切带骨禽类。



型号 Model	生产能力 Capacity	电压 Voltage	加工尺寸 Processing size	功率 Power	重量 Weight	外形尺寸 Dimension
LC-340	500-800kg/h	380V50Hz	3-40mm(可定制)	1.5kw	159kg	1700x640x1430mm
LC-500	500-2000kg/h	380V50Hz	4-40mm(可定制)	2.2kw	254kg	1700x760x1430mm

铝卡、铝丝

U型卡分为 U shape	整盘长城卡分为 Great Wall Clip	单个长城卡分为 Single Great Wall Clip	铝丝分为 Aluminum wire
501、502、503	15-7	-7	2.1、2.45
506、220、210	15-8	-8	2.7、2.9
74大、74小	15-9		
	18-9		
	18-10		

Helper company produces all kinds of aluminum clips and aluminum wires. It can be divided into U-Shape Clip, Clip, Single Great Wall clip, Great Wall Clip and aluminum wire.

U-Shape clip model: 501,502,503,506,220,21 and 74S.
 GreatWallclip model:15-7, 15-8, 15-9, 18-9and18-10.
 Aluminum wire: 2.1,2.45,2.7 and 2.9



P33 / P34

QZX-250/500/1000 smoke house series

烟熏炉系列



挂肠车

烟熏炉是肉制品熟化过程中必不可少的设备之一，可蒸煮、熏制各种香肠、火腿肠、干肠、腊肠、肉条及羊肉串等，使用本机熏蒸产品，可以确保产品的质量。本机具有蒸煮、干燥、加湿干燥、烘烤、烟熏、发糖上色、排风、清洗等功能。经过十几年的研制生产，根据客户的要求及市场反馈信息，对产品进行了更合理的改进，使其加热速度、烟熏效果都达到理想的效果。主机框架夹层均填充进口耐高温聚氨酯发泡材料一次成型，使保温效果增强，密封性好，节能高效。全自动烟熏炉的触摸屏，可编程控制器及继电器，电磁阀等关键电气元件均采用进口产品。大视窗的人机界面，生动直观地显示设备运行状态，可在运行中随时调整时间、温度、湿度、排风大小等状态参数，操作非常简单。具有优异的发烟及循环系统，可使炉内的烟雾均匀分布，从而使肉制品着色均匀，色泽美观，保证产品具有较高的出品率。

Smoke oven is one of the absolutely necessary equipments in the process of making meat products. This machine has such functions as boiling, drying, roasting, smoking, ventilating and cleaning etc. With the experience of decade development and careful consideration of the clients' requirement and market feedback, the product is given reasonable improvement, which has perfected the heating rate and fume smoking effect. The interlayer of the main machine frame is filled with imported high temperature resistant polyurethane frothing material which is able to guarantee good heat preservation, airtightness, energy saving and high efficiency.

Key electric components of automatic smoke oven such as touch screen, programmable controller, relay and electromagnetic valve etc are all used imported products. Large human-machine interface visually shows the equipment operation and is easy at any time in the running to adjust the operation parameters such as time, temperature, humidity and ventilation etc. With excellent fuming and circulating system, the smoke in the oven can be evenly distributed to make meat products uniform color and a higher yield rate.



型号 (Model)	生产能力 (kg) Productivity	功率 (kw) Power	高压蒸汽压力 (Mpa) High steam pressure	低压蒸汽压力(Mpa) Low steam pressure	高压炉内 温度(℃) Temperature	低压炉内 温度(℃) Temperature	标准料车 (mm) Trolley	重量 (kg) Weight	炉体尺寸 (mm) Dimension
QZX-250	250	8.6	0.3-0.6	≤ 0.1	< 85	< 100	1030x 1020x 1860	1800	1475x 1140x 2500
QZX-500	500	16.6	0.3-0.6	≤ 0.1	< 85	< 100	1030x 1020x 1860	2500	1475x 2235x 2500
QZX-1000	1000	32.6	0.3-0.6	≤ 0.1	< 85	< 100	1030x 1020x 1860	4200	1475x 4340x 2500
糖熏炉 TXL-250	250	13.5	0.3-0.6	≤ 0.1	< 90	-	1030x 1020x 1860	1600	2100x 1500x 2420
糖熏炉 TXL-500	500	13.5	0.3-0.6	≤ 0.1	< 90	-	1030x 1020x 1860	2400	3200x 1500x 2420



GR-60-3500 vacuum tumbler machine series

真空滚揉机系列

真空滚揉机是在真空状态下，利用物理冲击的原理，让肉在滚筒内上下翻动，相互撞击、摔打、达到按摩、腌渍作用，可以使肉均匀的吸收腌渍，提高肉的结着力及产品的弹性；本机具有肺呼吸功能，让产品在滚筒内做膨胀、缩小的往复运动，改善了肉组织的结构，提高了肉的弹性，增加了出品率。可以增强保水性，改善产品的内部结构。

新一代的全自动真空滚揉机除具有真空滚揉机的特点外，还具有电脑控制与变频技术的功能，使机器使用更安全，更方便，更加节能高效。整机采用不锈钢制造，结构紧凑，滚筒两端均采用旋压式封帽结构，最大的增加滚筒内的摔打空间，使滚揉产品的效果均匀，噪音小，性能可靠，操作简便，使用效率更高。

Taking advantage of the physical impact principle, the machine makes meat rolled and impacted in the roller under vacuum condition to be salted. The machine is able to make the meat salted evenly to increase meat adhesive force and elasticity, better the product taste and section effect, enhance production rate and water retention, and improve the internal structure of the product. In addition to the features above, the new generation automatic vacuum rolling machine has the function of computer control and variable frequency technique. New-updated remote control operating system makes the machine safer, more convenient, more energy-saving and more high-efficient. The stainless steel material, the compact structure, and rolling spinning closure cap structure on both sides enable the machine to have such advantages as evenly effect, little noise, reliable function, easy operation and high efficiency.

型号 (Model)	生产能力 (kg) Productivity	容积 (L) Volume	功率 (kw) Power	滚揉转速 (rpm) Roll speed	真空度 (mpa) Vacuum degree	重量 (kg) Weight	外形尺寸 (mm) Dimension
GR-60	20-40	60	0.75	8	-0.08	95	800x 620x 830
GR-200	80-120	200	1.3	8.5	-0.08	450	1400x 1000x 900
GR-500	200-300	500	1.65	8	-0.08	600	1800x 1300x 1400
GR-1000 (可选配制冷)	500-600	1000	2.6	6.5	-0.08	850	2000x 1400x 1700
GR-1600 (可选配制冷)	800-1000	1600	5.2/6.2	7.5/11.2	-0.08	1250	2100x 1500x 2000
GR-2500 (可选配制冷)	1250-1500	2500	7/8	7/10.5	-0.08	1600	2500x 1800x 2100
GR-3500 (可选配制冷)	1800-2200	3500	9.5	3-10.5 (可调)	-0.08	1800	3520x 1600x 2200



上料机 conveyors

上料机可配合滚揉机上料。
可减少人工工作量，提高工作效率。
Conveyors can be used with rolling machine.
It helps reduce artificial workload and increase working rate.

型号 (Model)	功率 (KW) Power	提升能力 (kg) Lifting weight	提升高度 (mm) Lifting height	重量 (kg) Weight	外形尺寸 (mm) Dimension
GRSL	0.75	200	与滚揉机配套	250	1800x1000x1700



GR-1700II/2500II/3500II Vacuum tumbler

可翻转式真空滚揉机 / 真空制冷滚揉机

型号 (Model)	生产能力 Productivity	容积 (L) Volume	功率 (kw) Power	滚揉转速 (rpm) Roll speed	真空度 (mpa) Vacuum degree	重量 (kg) Weight	外形尺寸 (mm) Dimension
GR-1700II	1000-1200kg/次	1700	7.5	2-12 可调	-0.08	1600	3070x 1798x 2070
GR-2500II	1500-2000kg/次	2500	12	2-12 可调	-0.08	1800	3500x 2300x 2580
GR-3500II	2000-2500kg/次	3500	13.5	2-12 可调	-0.08	2300	3750x 2100x 2550
GR-1700II 制冷	1000-1200kg/次	1700	8.5	2-12 可调	-0.08	1800	3100x 1650x 2100
GR-2500II 制冷	1500-2000kg/次	2500	13.5	2-12 可调	-0.08	2000	3750x 1900x 2100
GR-3500II 制冷	2000-2500kg/次	3500	14.5	2-12 可调	-0.08	2500	3900x 1900x 2200



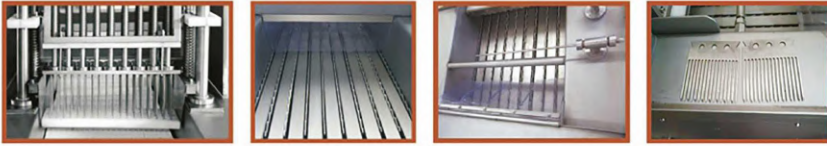
性能介绍:

可翻转式真空滚揉机采用卧式倾斜滚揉方式，相较于普通滚揉机来说，具有更大的装载能力。液压出料，滚筒前倾，使出料更迅速。本机采用变频调速和三角浆叶的设计，适用于多种类型产品的生产。

Performance introduction

Greater carrying capacity; Hydraulic discharging and roller forward; Designed by frequency control and triangular vanes





ZN-50 ZN-74 HDJ-656

Saline injection machine series Automatic tenderizing machine

盐水注射机系列 / 自动断筋机

本机可将盐水及辅料配制的腌渍剂均匀的注射到肉块中，缩短了腌渍时间，大大提高了肉制品的口味及出品率。可根据工艺要求调节注射压力，腌渍剂均匀连续的注入肉中，达到最理想的注射效果。本机设计严谨，结构合理，操作简便，是肉制品加工过程中的理想设备。Saline injection machine can evenly inject the brine and salt auxiliary materials into the meat blocks, which can shorten the pickling time and greatly raise the flavor and the producing rate of the meat products. The machine can be adjusted with stepping rate, stepping distance, platen gap and injection pressure according to the technological requirements. Then the brine and salt auxiliary materials can be injected into the meat evenly and continually to reach the optimal effects. With precise design, reasonable structure, easy operation, convenient rinse and demountable driving chains, the machine is ideal equipment for the meat products processing.

1. 采用先进的 PLC 可编程控制系统和大视窗触摸屏控制，设备方便，操作简单。
2. 主动力传统采用国际先进的变频交流调速系统，启动电流小，注射次数可无极调整。
3. 本机设的自动保护装置，当注射针碰到随之抬起，不受损伤，可带骨注射。
4. 配有气动通针装置，操作简单，清洗方便。
5. 采用德国不锈钢注射泵，注射迅速，注射率高，符合 HACCP 卫生标准。
6. 盐水箱采用先进的三级过滤系统，并配有搅拌系统，料水能均匀融合，使注射效果更好。

1. Advanced PLC is adopted as well as touching HMI to make it easily operated.
2. The main drive mechanism is using a frequency converter alternating current system to adjust the speed. The starting current is small. Injection times can be adjusted freely.
3. An auto-protection device is installed on injector. The injection needles will lift up once touching any hard objects to keep themselves from damages. Thus injection with bones can be fulfilled.
4. Easily operated pneumatic device is equipped to clean needles.
5. Injection pump is made in Germany to have quick and efficient injections, which meets HACCP standards. The entire machine is made of SUS304.
6. The water tank adopts double filtration system and match with mixing system to make material mixing uniformly and reach well injection effects.

型号 (Model)	生产能力 (kg/hour) Productivity	功率 (kw) Power	注射率 (%/time) Inject rate	注射针头 (支) Needle	注射压力 (Mpa) Pressure	注射次数 (time/min) Inject speed	步进速度 (mm/time) Step Distance	步进距离 (mm/time) Step distance	注射厚度 (mm) Inject thickness	重量 (kg) Weight	外形尺寸 (mm) Dimension
ZN-50	600-1200	3.53	30-50	50	0.4-0.7	15-55	/	30-60	30-110	500	2100x600x1716
ZN-74	1000-1500	4.18	30-50	74	0.4-0.7	15-55	/	30-60	30-140	680	2200x680x1900
HDJ-656	2500-3500	3.53	/	656	/	15-55	/	30-60	5-45	350	2100x600x1716

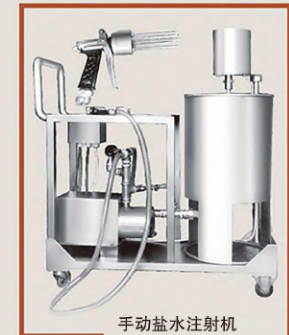
Manual brine injector, Brine maker 手动盐水注射机，盐水制备器

用于火腿、培根、咸猪手、牛排、禽类等类似产品滚揉前的注射盐水。主要供实验室、餐厅及小型肉制品加工企业使用。手动注射，采用进口不锈钢盐水泵。随机配 1-2 把注射枪，针数 5-10 根。可根据客户要求选配搅拌器。

1. It is used in meat brine inject process (ham, bacon, tillet and poultry) before tumbling.
2. For Lab., Restaurant, and small meat food process plant. Manual inject.
3. Use high quality imported pump, and attach the brine tank.
4. Equip 1 or 2 guns with 5-10 needles.

型号 (Model)	注射压力 Injector Pressure	注射针数 Needles(Piece)	功率 (kw)Power	重量 (kg)Weight	外形尺寸 (mm)Dimension
SZS-10	0.4-0.7Mpa	10	1.18	60	700x400x755

ZN-74
盐水注射机



手动盐水注射机
Manual brine injector



盐水制备器 Brine maker

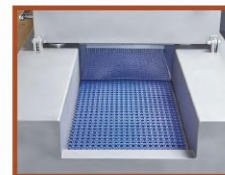
ZN-120 ZN-236 Saline Injecting Machine

盐水注射机

1. 采用先进的 PLC 可编程控制系统和大视窗触摸屏控制，设置方便，操作简单。
2. 主动力传动采用国际先进的变频交流调速系统，启动电流小，启动特性良好，注射次数可无极调速。
3. 注射厚度大，可对整鸡，整鸭，大块肉等禽肉的注射。注射针采用微气压弹簧装置，当注射针碰到骨头等硬物后单根针可自动在气动弹簧的作用下停止向下运行，保护注射针，气弹簧的气室压力可调，保证对原料中骨结构不破坏。注射压力，注射率，可根据注射原料大小和肉类组织结构任意调整，一次注射就可以达到普通注射机多次注射效果。
4. 配有气动通针装置，操作简单，清洗方便。
5. 采用先进的伺服输送带平行送料系统，伺服电机准确快速驱动，可以使物料快速移动到指定位置，步进准确，步进精度高达 0.1mm，使产品注射均匀；同时设计了快速拆卸把手，输送带拆卸简单，清洗方便。
6. 采用德国不锈钢注射泵，注射迅速，注射率高，符合 HACCP 卫生标准。
7. 水箱采用先进的三级过滤系统，并配有搅拌系统，料水能均匀融合，使注射效果更好。

1. It adopts PLC programmable control system and large windows touch screen to control, easy to operation.
2. Initiative transmission adopts international advanced AC speed regulating technique, with small startup current and well startup behavior, injecting time is stepless speed adjustment.
3. Then machine can inject thick meat block such as whole chicken, duck and large meat block, etc. The injection needles adopt pneumatic spring mechanism, and single needle will stop move down when touch hard material such as bone, etc. to protect needles. The air pressure of pneumatic spring can be adjusted to make sure not to damage bone structure in raw material. Injection pressure and rate can be adjusted according to meat size and organization structure. The one time injection effect is better than many injection times by common injecting machine.
4. It have pneumatic device to make needle clean, easy to operate and clean.
5. It adopts advanced servo conveyor belt transmission system, servo motor accurate and fast driving to make material move to position fast and accurate, the step accuracy is 0.1mm, and make injection uniformity. We design a fast-remove handle to make the conveyor belt easy to remove and clean.
6. The injection pump is German stainless steel injection pump, with fast injection speed and high injection rate, meet the HACCP standard.
7. The water tank adopts tertiary filtration system and match with mixing system to make material mixing uniformly and reach well injection effect.

型号 (Model)	生产能力 (kg/hour) Productivity	功率 (kw) Power	注射率 (%/time) Inject rate	注射针头 (支) Needle (pc)	注射压力 (Mpa) Injection Pressure	供气压力 (Mpa) Air pressure	注射次数 (time/min) Inject speed	步进距离 (mm/time) Step distance	注射厚度 (mm) Inject thickness	重量 (kg) Weight	外形尺寸 (mm) Dimension
ZN-120	1500-2500	8.6	30-50	120	0.4-0.7	0.4-0.7	12-30	50-100	30-190	1500	2210x1540x1800
ZN-236	2000-4500	18.75	40-60	236	0.4-0.7	0.4-0.7	15-35	0-120	30-180	1680	2800x1095x2045



ZB-20-550 bowl cutter series

斩拌机系列

斩拌机是利用高速旋转的斩刀将肉、蔬菜、香菇、木耳、葱、姜等物料斩切成不同大小的颗粒。我公司生产的斩拌机刀速、锅速、斩刀与转锅的间隙达到最合理的组合，使斩切产品颗粒更均匀。转锅后盖带防漏胶条，斩料和清洗过程中不向锅外漏料。刀轴采用两道密封，保护轴承不被锈蚀，延长轴承的使用寿命，防止油污进入锅内，保持刀轴旋转部位良好的润滑使传动平稳，密封件易于更换。刀尖与斩锅的间隙小于2mm。

The cutting machine utilized the cutter rotating with high speed to cut the meat, vegetable, fragrant mushroom, agarics, shallot and ginger etc into the grains with different sizes. The cutting machine produced by our company has the most suitable combination of the cutting speed, pot speed and the distance between the cutter and rotating pot, all these make the cut grains more equal. The back cover of the rotating pot has the rubber bar to prevent the leak, so the material won't leak out during the period of cutting and washing. The axis of cutter has two seals to protect the axletree from being eroded, which can extend the life of the axletree and prevent the drain dropping into the pot and keep the nice lubrication of the rotation place and keep the transmission stable. The seal parts are easy to replace. The distance of the cutter's point and the cutting pot is less than 2mm.

型号 (Model)	生产能力 (kg) Productivity	容积 (L) Volume	功率 (kw) Power	斩刀数量 (把) Knife quantity	转锅转速 (r/min) Bowl speed	出料器转速 (rpm) (r/min) Unloader	斩刀速度 (r/min) Knife	重量 (kg) Weight	外形尺寸 (mm) Dimension
ZB-20	10-15	20	1.85	3	16	-	1650/3300	215	770x 650x 980
ZB-80	60	80	22	6	8/12	88	126/1800/3600	1100	2300x 1020x 1195
ZB-125	80-90	125	33.2	6	7/11	88	300/1500/3000/4500	2000	2100x 1420x 1600
ZB-200	120-140	200	60	6	7.5/10/15	82	400/1100/2200/3600	3500	2950x 2400x 1950
ZKB-200 (真空 Vacuum)	120-140	200	65	6	7.5/10/15	变频调速	300/1800/3600	4800	3100x 2420x 2300
ZB-330	200-240	330	82	6	6/12 变频调速	无极调速	300/1800/3600	4600	3855x 2900x 2100
ZKB-330 (真空 Vacuum)	200-240	330	102	6	无极调速	无极调速	200/1200/2400/3600	6000	2920x 2650x 1850
ZB-550	450	550	120	6	无极调速	无极调速	200/1500/2200/3300	6500	3900x 2900x 1950
ZKB-550 (真空 Vacuum)	450	550	125	6	无极调速	无极调速	200/1500/2200/3300	7000	3900x 2900x 1950



ZKB-200 真空斩拌机



1. 本机以不锈钢为原料制作，结构紧凑、美观、易清洗。
2. 主要部件采用加工中心加工，确保加工精确度。
3. 防水及人性化设计，操作简单控制面达IP65安全。
4. 刀刃锋利耐用、高速运行平稳，料斩拌、乳化效果好。
5. 选用进口轴承；电机符合欧标，抗过载能力强。

1. This machine is manufactured with the material of the stainless steel, the structure is tense, and it is good-looking and easy to wash.
2. The main parts adopt the processing center to manufacture so as to guarantee the precision of the processing.
3. Water prevention and human-oriented design, while the operation is simple, the control board can reach IP65 security.
4. The edge of the cutter is sharp and bearing to use, stable when operating with high speed, the material is cut and the emulsification effect is nice.
5. It adopts the imported axletree, while the motor meets the European standard with strong ability of overload resistance.



JB-60-1200 mixer series

普通搅拌机系列

我公司生产的系列搅拌机,整机采用优质不锈钢材料制成,可靠耐用,易于清洗,密封效果好,采用向后开启式,安全可靠。采用平行双轴结构,斜板式桨叶,使物料在料箱中翻动的同时还作圆周运动,使各种材料搅拌的更加均匀。料箱盖的开合和出料门的开关均采用气缸操作,只需拨动旋钮即可实现全部动作,操作非常方便。本机采用针轮摆线减速机链条传动,使机器运动平稳可靠、噪音低,是同等产品的佼佼者。真空搅拌机是参照国际同类先进产品的特点,同时结合我国肉制品加工工艺特点,自行研制开发的。



JB-1200 普通搅拌机

双轴双速搅拌机



The vacuum mixer produced by our company is developed through our own efforts combining the characteristics of the advanced machine abroad. The vacuum device will make a vacuum condition in mixer vessel. Which will mix the material evenly and inflated sufficiently. And with the characteristics of no air bubble. Good flexibility, bright color and the ability of extracting protein to the maximum limit, the mixer is definitely an ideal equipment to change the product quality. The complete machine is made from stainless steel, which enable the machine to have good reliability, durability, airtightness and convenience for rinse. The backward makes it safe and reliable.



型号 (Model)	料箱容积 (L)	搅拌速度 (r/min)	电功率 (kw)	机械重量 (kg)	外形尺寸 长 x 宽 x 高 (mm)
JB-60	60	75/37.5	0.75	180	1060x 500x 1220
JB-150	150	80/40	2.4	350	1360x 680x 1200
JB-400	400	100/50	2.2/2.3x 2	450	1400x 900x 1500
JB-650	650	84/42	4.5x 2	700	1760x 1130x 1500
JB-1200	1200	84/42	7.5x 2	1100	2160x 1400x 2000

Model	Capacity of the material box (L)	Mixing speed (r/min)	Power (kw)	Weight of the machine (kg)	Dimension of the formal appearance Length x width x height (mm)
JB-60	60	75/37.5	0.75	180	1060x 500x 1220
JB-150	150	80/40	2.4	350	1360x 680x 1200
JB-400	400	100/50	4.4/4.6	450	1400x 900x 1500
JB-650	650	84/42	9	700	1760x 1130x 1500
JB-1200	1200	84/42	15	1100	2160x 1460x 2000



ZKJB-60-2500

Vacuum meat mixer series/ Vacuum cooling mixer series



真空搅拌机系列 / 真空制冷搅拌机系列



汉普真空搅拌机是参照国际同类先进产品的特点，同时结合我国速冻食品加工工艺特点，自行研制开发的。物料在真空状态下搅拌均匀，充分膨胀，弹性好，色泽鲜艳并最大限度地提取蛋白质，是改变产品品质的理想设备。整机采用优质不锈钢材料制成，可靠耐用，易于清洗，密封效果好，采用向后开启式，安全可靠。采用平行双轴结构，斜板式桨叶，使物料在料箱中翻动的同时还作圆周运动，使各种材料搅拌的更加均匀。料箱盖的开合和出料门的开关均采用气缸操作，只需拨动旋钮即可实现全部协作，操作非常方便。可任意设定真空度，更适合各种工艺要求。本机采用针轮摆线减速机链条传动，使机器运动平稳可靠、噪音低，是同等产品的佼佼者

The feature of our vacuum stuffing mixer is based on the international standard and combining characteristics of quick-frozen food processing industry. Self-developed. Ideal equipment to improve product quality. Double-axis parallel structure, inclination paddles, to ensure stuffing with good mixing uniformity, improve the mixing speed and effect.

1. The air bubble in the material can be sucked out by the adjustable vacuum degree, an oxygen-free disinfection can be made to the materials, results to a superior looking of the materials, a longer shelf life.
2. Auto cover opening and closing, excellent performance.
3. Stainless steel manufactured, easy to clean.
4. Adopting spindle wheel swinging reducer, smooth rotation, lower noise.

型号 (Model)	料箱容积 (L)	搅拌速度 (r/min)	电功率 (kw)	机器重量 (kg)	外形尺寸 长x宽x高 (mm)
ZKJB-60	60	75/37.5	1.5	260	1060x600x1220
ZKJB-150	150	80/40	3.5	430	1360x680x1200
ZKJB-300	300	84/42	5.9	600	1190x1010x1447
ZKJB-650	650	84/42	10.1	1300	1553x1300x1568
ZKJB-1200	1200	84/42	17.2	1760	2160x1500x2000
ZKJB-2000	2000	10-40 变频调速	18	3000	2270x1930x2150
ZKJB-2500	2500	20-40 变频调速	25	3300	2340x2150x2230
ZKJB-650I 制冷	650	84/42	10.1	1500	1585x1338x1750
ZKJB-1200I 制冷	1200	84/42	19	1860	1835x1500x1835



QK-2000 frozen meat cutting machine

冻肉切块机



QK-2000 冻肉切块机可直接切割未经解冻的肉块，是肉制品加工过程中必不可少的设备。本机吸取了国外同类产品的先进技术，并结合我国实际加工工艺研制生产的，具有性能稳定，投入小，生产效率高。整机均采用优质不锈钢制造，刀片采用优质合金制造，切销效果好。该机适用于多种肉类模块冻肉的切断、分割，也适用速冻汤圆中的速冻油的切割。生产过程中无需解冻可直接将冻肉块切断、分割，大大降低了用户生产过程中的制冷费用，保证了肉质不受二次污染和损耗，肉的营养成分不损失，味道鲜美。

QK-2000 frozen meat cutting machine is able to directly cut the frozen meat, so it is necessary during the process of the meat product processing. This machine absorbed the advanced technologies of the same products in domestic market, and combined the Chinese actual processing techniques, so it has stable capacities, less investment and high productivity. The total machine adopts the stainless steel of high quality to manufacture; the blade adopts the alloy of nice quality to manufacture, so it has the nice cutting effects. This machine is suitable to the cutting, separating of the frozen meat pieces of many kinds, also suitable to the cutting of the frozen oil in the frozen rice glue ball. It can directly cut and separate the frozen meat piece Without thawing during the production process, which greatly reduce the refrigeration expenses of the users during the production process and guarantee the meat quality avoiding of the second time of the pollution and losses, while the nutritious components won't lose so it still taste delicious.

型号 (Model)	刀架往复次数 (r/min)	料道宽度 (mm)	横刀行程 (mm)	输出功率 (kw)	生产量 (T/h)	机器重量 (kg)	外形尺寸 长×宽×高(mm)
QK-2000	41	460/500	200	5.5	5	600	1255 x 720x 1420

Model	The shuttle times of the blades(r/min)	Width of the material track(mm)	Course of the horizontal cutter(mm)	Output power(mm)	Productivity (T/h)	Weight of the machine(kg)	Dimension of the formal appearance(mm) Length x width x height
QK-2000	41	460/500	200	5.5	5	600	1255 x 720x 1420

1. 该机具有噪音小、使用安全、生产效率高、故障率低、外观大方等优点。
 2. 本机机架外壳及所有和肉料接触部位，全部采用优质 304 不锈钢制造，对食品无污染。
 3. 刀片采用优质合金钢制造，刀刃锋利、可靠耐用。
 4. 本机具有急停按钮，操作安全可靠。
1. This machine has many advantages such as the small noise, safe use, high productive effects and low failure rate etc.
2. The external crust of the machine bracket and all the parts contact with the meat all adopt the 304 stainless steel material to manufacture, so it has no pollution to the foods.
3. The blade adopts the alloy steel of high quality to manufacture, the edge is sharp and durable and reliable.
4. This machine has the button of urgent stoppage with the safe and reliable operation.



QK/P600C frozen meatslicer/cutter

冻肉切块/切片机



该机是肉食品、速冻等行业生产加工的首选设备。它可将未解冻的 -18°C -0°C ，5-40kg重的冻肉直接切成块或片状，具有使用操作方便，噪音低，振动小，性能可靠，生产效率高的特点，该机在切割冻肉的过程中无需解冻，可降低用户生产过程中的制冷费用。

本机机架外壳全部采用不锈钢制造，刀片采用优质合金钢制造，刀刃锋利，切割可靠。该机气缸垂直后置，与肉料滑道分离，保证冻肉不受任何污染。

另外，该机在没有压缩空气或气源发生故障的情况下，可直接人工上料，维持使用，不会影响正常生产，亦可适用没有压缩气源的企业使用。

1. With the features of dependable performance, efficient, no pollution to foodstuff, directly cutting the frozen meat block into pieces.
2. No need of defrosting during the processing, greatly saving the refrigeration cost, avoiding pollution and consumption, keeping the nutrition.
3. Knives made of superior alloy steel, sharp knives edge to ensure reliable cutting effects. Equipped with lifting device to save labor force.
4. Temperature of frozen meat: $-18^{\circ}\text{C} \leq T \leq 0^{\circ}\text{C}$

型号 Model	料道宽度 (mm) width of the material track	料道高度 (mm) Height of the material track	功率 (kw) Power	气缸行程 (mm) Operation course of the gas pot	工作压力 (kg/cm ²) Pressure of operation	机械重量 (kg) Weight of the machine
QK/P-600C	540	200	7.5	420	4-5	600

外形尺寸长 x 宽 x 高 (mm) Dimension of the formal appearance Length x width x height	原料重量 (kg) Weight of the frozen meat	原料体积 (mm) Measurement of the frozen meat	切片厚度 (mm) Thickness of finished blocks	生产能力 (kg/hour) productivity
1750x1000x1500	5-40	$\leq 650 \times 500 \times 180$	5, 10, 20, 30, 四种	3000-4000



QPJR-250 Slicing and grinding machine

冻肉切片绞肉机（一体机）

提升机、本机有切片（块）机、绞肉机三种机型组合而成，采用 PLC 变频控制，切片刀高度为 40mm，切肉片的厚度为 20mm，刀盘每转一圈切削一层的厚度，他可以将未解冻的（ $-10^{\circ}\text{C} \leq T \leq 0^{\circ}\text{C}$ ）体积 $650 \times 450 \times 160\text{mm}$ ，重 40kg 以下的标准肉块进行切片，绞制成规格不同的肉粒，为斩拌或搅拌做好前期准备工作，无需解冻所以保持了营养及肉的鲜味，当单独做绞肉机时还可以绞鲜肉。

This machine have three function as Slicer , grinder and lifter. this is a multifunction machine. PLC transducer control, slice knife height is 40mm, sliced meat thickness is 20 mm. cutter head rolling cut, it can cut 40kg standard frozen ($-10^{\circ}\text{C} \leq T \leq 0^{\circ}\text{C}$) meat block into sliced meat and different size minced meat, do a good preparation for bowl cutter's work or mixer's work. Because the meat do not need thaw, it can keep good taste and save nutrition. The multifunction machine also can grind fresh meat if only use grinder function.



型号 (Model)	生产能力 (T/H) productivity	电机总功率 (kw) Power	原料体积 (mm) Meat Dimension	原料重量 (kg) Meat Weight	冻肉温度 Meat temperature	重量 (kg) Weight	外形尺寸 (mm) Dimension
QPJR-250	3-4t/h	46	$\leq 650 \times 450 \times 180$	$\leq 40\text{kg}$	$0^{\circ}\text{C} \leq T \leq -10^{\circ}\text{C}$	3000	2750x1325x2700



DRQD-350/450 Frozen meat dicer



冻肉切丁机

- 1、本机为国内最新型的肉粒切割机，采用国内最先进的三维立体切割方式成产肉粒。
- 2、本机在切粒时原料肉保持在低温状态，不伤肉质，不产生脂肪挤压分离现象，肉粒均匀干净。
- 3、本机广泛适用于食品加工厂切割微小肉粒，适用于肉制品如肠类、调味类产品，火锅底料和面食类产品如包子、水饺、烧麦、馄饨。等各类产品中，可明显改善产品的品质和口感。
- 4、该机采用悬臂式刀具结构，刀具均可单独拆卸更换，拆卸简单，配备专用工具，10分钟内即可完成整套刀具更换。
- 5、本机设计有急停开关，保证操作使用安全。
- 6、切丁尺寸：5-25mm。（其他切粒尺寸可根据客户要求定制，改变切粒尺寸需更换刀组）

1. This machine is the latest meat cutting machine in China. It adopts the most advanced three-dimensional cutting method in China to produce meat particles.
2. The raw meat of the machine is kept at a low temperature during granulation, which does not damage the meat quality, does not produce fat extrusion and separation, and the meat particles are uniform and clean.
3. This machine is widely used in food processing plants to cut small meat particles. It is suitable for meat products such as intestines, seasoning products, hot pot bottom materials and pasta products such as steamed stuffed buns, dumplings, Shaomai, Wong stew and other products. It can significantly improve the quality and taste of the products.
4. The machine adopts cantilever cutter structure. The cutter can be disassembled and replaced separately. The disassembly is simple. Equipped with special tools, the whole set of cutter can be replaced in 10 minutes.
5. The machine is designed with an emergency stop switch to ensure safe operation.
6. Diced size: 5-25mm. (other grain cutting sizes can be customized according to customer requirements, and the knife set needs to be changed to change the grain cutting size)

型号 Model	电源 Voltage	功率 (kw) Power	最大切割尺寸 Maximum cutting size	切丁尺寸 (mm) Diced size	原料温度 Material temperature	产能 (kg/h) Capacity	重量 (kg) Weight	整机尺寸 (mm) Dimension
DRQD-350	380V	5.5	135.8mm	5-15	-6℃ -16℃	500-1000	650	1489x680x1294
DRQD-450	380V	11	227mm	5-25	-6℃ -16℃	1500-2000	800	1775x1030x1380



DRQD-350/450

QD-01/03 QK-300/400

Dicer/Multi-functional meat cutter

切丁机

QD-01 切丁机, 操作简单, 生产效率高, 能够实现精确切“丁”、切“条”, 目前切割肉丁规格为 5mm、10mm 两种, 也可根据客户要求定做, 是肉丁切割方面的首选设备。本机适用于温度在 -5℃ 左右的缓化肉的切丁、切条, 同时也能满足萝卜、土豆等块状蔬菜的切丁需求, 是食品加工行业少有的一机多用设备。本机机架外壳全部采用不锈钢制造, 对食品无污染。

QD-03 切丁机吸取了国外同类产品的先进技术, 结合我国的实际情况研制而成, 具有性能可靠、外形大方美观、生产效率高等优点。该机结构设计合理, 操作简单, 生产效率高, 能够实现精确切“丁、条、丝、片”。本机机架外壳全部采用不锈钢制造, 对食物无污染。刀片采用优质合金钢制造, 刀刃锋利, 切丁可靠。

切料规格: 丁形: 4、5、6、7、8、10、12、14、16、20、24、30、40、60、120(mm)

型号 (Model)	料槽尺寸 (mm) Channel	输出功率 (kw) Power	生产能力 (kg/h) Productivity	重量 (kg) Weight	整机尺寸 Dimension
QD-01	84x84x350	3	500-600	500	1480x800x1000
QD-03	120x120x550	3.7	700-900	700	1950x1000x1120

切块机

适用于零下 5 度的冻猪肋排、前排、小排、羊排、冻肉、边鸡边鸭、肉片等切块一次成型机器。

加厚不锈钢方管机架, 优质 304# 不锈钢符合食品级要求, 独立送料机构模块, 可快速拆卸清洗。

独立的安全保护罩及安全保护感应开关, 漏电保护, 电机保护, 自动润滑系统, 缺油自动报警停机, 快速侧开门, 底部防鼠网。

切块刀具规格: 9 槽 31.6mm, 10 槽 28.25mm, 11 槽 25mm, 12 槽 23.12mm, 13 槽 21.15mm (可根据客户要求定制)

型号 Model	斩切频率 Cutting speed	电源 Voltage	功率 Power	净重 Weight	整机尺寸 Dimension
QK-300	82 次 / 分钟	380V	3kw	353kg	1000x600x1250mm
QK-400	35-85 次 / 分钟	380V	4kw	450kg	1560x868x1280mm



QD-01/03



QK-300



QD-02 Dicer

切丁机

我公司QD-02切丁机吸取了国外同类产品的先进技术，结合我国的实际情况研制而成的，具有性能可靠、外形大方美观、生产效率高，价格低于国外同类产品的优点。该机结构设计合理，操作简单，能够实现精确切“丁、条、丝、片”。本机目前可切割胡萝卜、土豆、薯类、洋葱、苹果、青红椒和零下2℃左右的草莓、桃、梨、菠萝等薯球根类物料为条丝形，切片形，丁块形产品，也可根据客户产品特点适用于部分肉类产品加工，是食品加工行业少有的一机多用设备。本机机架外壳全部采用不锈钢制造，对食品无污染。刀片采用优质合金钢制造，刀刃锋利，切丁可靠。

QD-02II型切丁机相较于第一代切丁机，送料更为快捷、拆洗更为方便，切丁刀可实现无极调速，无需更换切丁刀就可切出不同规格的丁或不同长度的条丝形，功能更为强大。

切料规格：
 丁形：3×3×3、4×4×4、5×5×5、6×6×6、7×7×7、8×8×8、10×10×10
 丝条形：3×3×(1.6-11)、4×4×(1.6-11)、5×5×(1.6-11)、6×6×(1.6-11)、7×7×(1.6-11)、8×8×(1.6-11)、10×10×(1.6-11)以及长19、25、30、40或自由长的条丝形，也可组合切厚12mm以内所需方块。

QD-02 Dicer absorbs foreign advanced technology, with the characteristics of dependable performance, reasonable structure, high-efficiency, easy operating, good-looking appearance, more competitive price. With the function of cutting carrot, potato, onion, apples green pepper, and frozen strawberry, peach, pear, pineapple into slice, strips, and cubes, etc. Also suitable for certain meat products processing, Multi-use of one machine in the food processing industry. There are no pollution to the food as entire stainless steel structure. Knives made of superior alloy steel to ensure its sharpness.

Cubes specification:
 Cubes: 3x3x3, 4x4x4, 5x5x5, 6x6x6, 7x7x7, 8x8x8, 10x10x10
 Strips: 3x3x (1.6-11) 4x4x (1.6-11) 5x5x (1.6-11) 6x6x (1.6-11) 7x7x (1.6-11) 8x8x (1.6-11) 10x10x (1.6-11)
 And with length of 19, 25, 30, 40 etc. Strips shape with the 12mm thickness products.

型号 (Model)	输入功率 (kw) Power	生产能力 (kg/h) Productivity	重量 (kg) Weight	外形尺寸 (mm) Dimension
QD-02	3.75	1000/4000	400	1440x 860x 1400



QD-02 切丁机



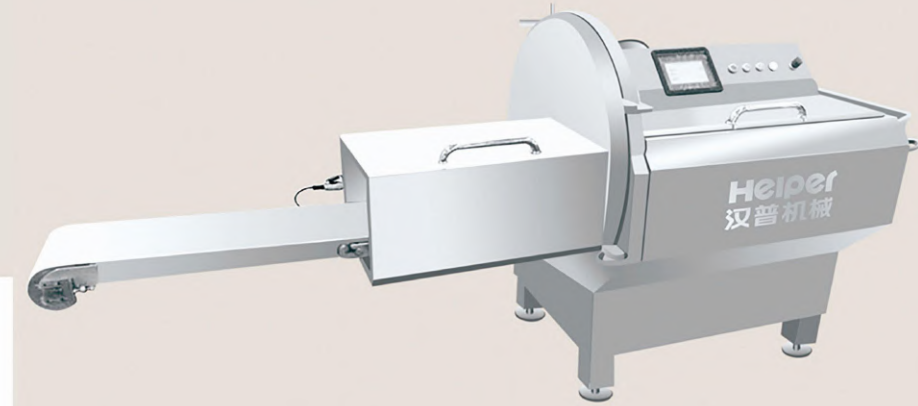
QKJ-I/II Bone saw



切片砍排机、锯骨机

1. 机体全部由 304 不锈钢焊接制成。
2. 机器可用于将冷冻的肉块、排条、腊肉、香肠等切成片，切割厚度有数字化设定，厚度准确，分份可满足用户小包装的要求。
3. 人机界面设定切片厚度，精准，容易操作。
4. 切片由电机带动减速机直连，伺服电机控制，切刀使用效率高，切割准确效果佳。
5. 分份是有数字化控制设定，可用于小包装。

1. The entire machine is made of SUS304.
2. The machine can be applied to slice frozen meat blocks, ribs, preserved hams, sausages, whose thickness can be adjusted digitally and precisely. Portion can meet users' demands.
3. HMI is adopted to set the parameters precisely and easy to operate.
4. Cutters are connected directly with the combination of motor and speed reducer controlled by servo motor. The cutters has a perfect performance with high efficiency.
5. Portions are set digitally and can be applied to small packs.



QKJ-II



QKJ-I

锯骨机 bone saw

锯骨机 bone saw



型号 Model	功率 (kw) Power	电源 Voltage	工作台尺寸 (mm) table size	锯条尺寸 (mm) saw size	可切割宽度 (mm) Cutting width	高度 (mm) height	重量 (kg) Weight	外形尺寸 (mm) Dimension
HJ-2500	1.1	380V	590x725	2428x 16x 0.56x 4T	250	300	165	785x 666x 1640
HJ-3000	1.5	380V	730x870	3070x 16x 0.56x 4T	330	400	218	895x 1000x 1810

切片厚度 Cutting thickness	分份功能 Portion	外形尺寸 (mm) Dimension	切割肉料长度 Chopping length	切割肉料温度 Chopping length temperature	电源功能 Power	切片速度 speed	切割最大截面积 Max. Cutting cross-sectional area
1-40mm 有数字化设定	分份片数有 数字化设定	2380X980X1350	700mm	-4℃	5 kw	200 片 / 分钟	250x 200
1-40mm 有数字化设定	分份片数有 数字化设定	1700X800X1250	680mm	-4℃	3.7kw	155 片 / 分钟	170x 150

JR-D120/140/250/300 frozen meat grinder series

冻肉绞肉机系列

冻肉绞肉机是食品加工中的必备设备，采用德国技术，具备最优越的性能，食品级优质 SUS304 不锈钢制造。它可将未解冻 -12℃ 以下冻肉直接进行绞切，制成规格不同的肉粒，不损害肌肉纤维组织，肉料升温小，利于产品保鲜，延长货架期，为斩拌或搅拌做好前期准备工作。整机采用不锈钢材料制造，适用于冻肉、速冻油、芝麻、花生、各种冻状物等。整机外形美观整洁、操作简单、效率高。由于在无解冻的情况下工作，更好地保持了肉的营养及肉的鲜味。本机料道与料斗连为一体，绞肉部分及外包装全部采用优质不锈钢制成，光亮平整、易于清洗、符合食品卫生要求。绞龙轴导程合理、入料口大、进料通畅、生产效率高。

The frozen meat chopper is the necessary equipment of the foods processing, it adopts the German technology with the excellent capacities, adopting the SUS304 stainless steel with the food-class excellent quality to manufacture, it can directly chop the frozen meat of un-thawing below -12c and make into the grains with different dimensions, no spoiling to the flesh fiber organization, the temperature of the meat material rises a little, which is advantageous to the product freshness conservation and the time of conserving the shelf life, all these are the preparation before the cutting and mixing. The total machine adopts the stainless steel material to manufacture, suitable for the frozen meat, deepfreeze oil, gingeli, earthnut and various kinds of the frozen materials etc. The total machine has the good-looking and tidy appearance with the simple operation and high efficiency. Due to the works under the situation of un-necessity of thawing, it can better conserve the nutrition of the meat and the fresh taste of the meat. This machine has the combined material track and hopper, the part of the meat chopping and the external packing adopt all the stainless steel of nice quality to manufacture, it is bright and tidy, easy to wash, meeting the requirements of the food sanitation. The chopping axis has the proper chopping course with big mouth of entering the material, while the material can add smoothly, with high production effects.



JR-D120 冻肉绞肉机



JR-D140 冻肉绞肉机



型号 (Model)	产量 (T/h)	功率 (KW)	电源 (V;HZ)	绞龙转速 (r/min)	机器重量 (Kg)	外形尺寸 长×宽×高(mm)
JR-D120	1.0-2.0	7.5	380;50	240	300	950x 550x 1050
JR-D140	1.5-3.0	15.8	380;50	170/260	1000	1200x 1050x 1440
JR-D250	3-4	37	380;50	150	1500	1813x 1070x 1585
JR-D300	4-6	55	380;50	47	2100	2600x 1300x 1800

Model	Productivity (T/h)	Power (KW)	Power supply (V;HZ)	Rotation speed of the lined parts (r/min)	Weight of the machine (Kg)	Dimension of the formal appearance(mm) Length x width x height
JR-D120	1.0-2.0	7.5	380;50	240	300	950x 550x 1050
JR-D140	1.5-3.0	15.8	380;50	170/260	1000	1200x 1050x 1440
JR-D250	3-4	37	380;50	150	1500	1813x 1070x 1585
JR-D300	4-6	55	380;50	47	2100	2600x 1300x 1800



JR-D300 冻肉绞肉机

DJ-150-600

Beating machine

打浆机

型号 Model	生产能力 Capacity	功率 (kw) Power	电压 Voltage(v)	料斗容积 (L) Volume of the hopper	重量 (kg) Weight	外形尺寸 (mm) Dimension
DJ-150	150kg/ 次	18.5	380V	150	260	2000x1000x1800
DJ-400	400kg/ 次	38.5	380V	400	3500	3230x1520x2530
DJ-600	550kg/ 次	47.2	380V	600	4000	3640x1620x2730

1. 采用先进的 PLC 可编程控制系统和大视窗触摸屏控制，设置方便，操作简单。
2. 主动力传动采用国际先进的变频交流调速系统，启动电流小，气动特性良好，可实现无极调速。
3. 独特的真空系统，改善肉质纤维，口感好，久煮不散。
4. 独特的扭剪刀设计，开机 3-5 分钟即可完成打肉，配料，搅拌成浆，升温低，出产效率高。
5. 整机采用符合国际食品卫生标准的 SUS304 不锈钢制造，使产品符合 HACCP 卫生标准。
6. 适合搅拌贡丸、鱼丸、鱼卷、鱼肉卷、海螺丸、肉饼、热狗肠等肉类制品、鱼制品馅料搅拌专用。



1. The entire machine is made by SUS304 of international food sanitary standards to meet HACCP standards.
2. Advance PLC and big touch screen are applied thus it's easy to set and operate.
3. The main drive is advanced international frequency conversion AC speed governing system. It has small starting current and perfect starting features. The speed can be changed without limitation.
4. Unique vacuum system to improve meat fiber is used to make meatballs a good taste and Elasticity.
5. Special twisted knives design can finish processes such as meat cutting, material feeding and mixing into slurry within 3-5min after starting. It is high efficiency with small temperature rises.
6. It can be applied to the mixing process of fish balls, fish rolls, patties, hotdogs and similar materials for stuffing of meat and fish.



JXW-200 JXW-210 SZT-01 Stuffed Meatball Machine

包心丸子机 / 狮子头丸子机

1. 该机采用机械传动，设计合理，操作方便，外形美观，采用 SUS304 不锈钢制造，符合国家食品卫生要求。
2. 该机可用于生产包心鱼丸，包心贡丸，撒尿牛丸等各种肉丸产品。
3. 肉丸大小、包芯大小均可调节，成型稳定一致，定量输出，生产效率高。

1. The machine works on mechanical transmission with rational design. It's easy to operate. With favorable appearance, the machine is made of SUS304 thus domestic food sanitation standards are met.
2. This machine is capable of stuffed fish balls, stuffed pork balls, beef balls and many other kinds of meatballs.
3. Sizes of meatballs and stuffing are adjustable on it. Molding is regular and portion output is precise. It is highly efficient.

型号 Model	生产能力 Productivity	功率 (kw) Power	电压 (v) Voltage	材料 Material	重量 (kg) Weight	外形尺寸 (mm) Dimension
JXW-200	100 粒 /min	1.1	380V/50HZ	304 不锈钢	240kg	800*600*1750
JXW-210	300 粒 /min	1.5	380V/50HZ	304 不锈钢	200kg	110*580*1700mm
SZT-01	100-200 粒 /min	1.5	380V/50HZ	304 不锈钢	200kg	990*790*1780mm



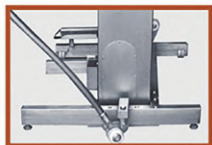
T-200/YT-200 lifter series

提升机系列

我公司生产的提升机分为移动式 and 固定式两种机型，汉普提升机是专为 200L 标准肉车配套的提升设备，其功能是将物料提升到一定高度后，倾倒入设备的料斗中，以完成加料工作。该机采用全不锈钢材料制造，链条传动，便于清洗，美观耐用。移动式提升机设有移动架，可根据工作场地变化移动设备。

The lifters which our company produced have two types: moving and fixed. Helper lifter is specially for the 200L standard meat truck, its function is to lift the material to some height and pour into the hopper of the equipment so as to finish the material addition. This machine adopts full stainless steel material to manufacture, chain transmission, easy to wash, good-looking and able to endure. The moving lifter has the moving bracket, able to move the equipment according to the change of the operation places.

型号 (Model)	提升重量 (kg) Lift weight	提升高度 (m) Lift height	升降速度 (m/min) Lift speed	功率 (kw) Power	重量 (kg) Weight	外形尺寸 (mm) Dimension
T-200	200	1.3-1.8 可调	3	1.5KW	500	1200x1100x2800
YT-200	200	1.3-1.8 可调	3	1.5KW	500	1400x1130x2700



YT-200 提升机



T-200 提升机

YC-200 standard material truck

标准料车

外形尺寸根据国际标准制造。
采用进口不锈钢板制造并进行表面处理，易于清洗，经济耐用。
可与提升机配套。
外形尺寸：长 x 宽 x 高 800x700x700 (mm)
容积：200 升

The dimension of its formal appearance is manufactured according to the international standard.
It adopts the imported stainless steel board to manufacture and give the superficial treatment, easy to wash, economic and able to endure.
Able to cooperate with the lifter.
Dimension of the formal appearance Length x width x height (mm): 800x700x700
Capacity: 200 liters





SXJ-35 automatic stuffing machine

自动上料机

型号 (Model)	生产能力 (kg/min)	功率 (kw)	电源 (v/hz)	料箱容积 (L)	重量 (kg)	外形尺寸长 x 宽 x 高 (mm)
SXJ-35	30	3	380/50	300	250	1780x750x1200

Model	Productivity(kg/min)	Power(kw)	Volage(v/hz)	Hopper Volume(L)	Weight(kg)	Dimension of the fomal appearance(mm) Lengthxwidthxheight
SXJ-35	30	3	380/50	300	250	1780x750x1200

- 1、本机以不锈钢为原料制作，结构紧凑、美观、易清洗。
- 2、主要部件采用加工中心加工，确保加工精确度。
- 3、防水及人性化设计，操作简单控制面板达 IP65 安全。
- 4、自动上馅，速度快，节省人力，物力，是速冻厂家首选的上馅设备。

- 1、This machine is manufactured with the material of the stainless steel. the structure is tense. and it is good-looking and easy to wash.
- 2、The main parts adopt the processing center to manufacture so as to guarantee the precision of the processing.
- 3、Water prevention and human-oriented design, while the operation is simple, the control board can reach IP65 security.
- 4、Automatic stuffing machine is the best choice of the fast frozen food factory with high speed, saving labour and materials.

SAUSAGE BOARD

灌肠案板

本品采用优质不锈钢板材制作。表面光洁，易于清洗，可根据生产需求制作，有分割案子，灌肠案子等多种型号。

This product made of stainless steel, polished surface is easy to clean. The size and details can be made as you request. Such as cut board and filling board.



BRAISER AND BOILER

蒸煮锅

1. 本机采用独特的蒸汽加热或电加热两种形式，使水温升温时间快、效果好。
2. 采用全层保温机构，保温效果好，并采用进口电子元件，保证整机使用寿命。
3. 本产品采用优质 304 不锈钢板材制作，表面光洁，易于清洗。可根据客户需求定做。

Braiser and boiler

1. Steam heating mode to rise temperature fast.
2. Double layer temperature reservation structure and imported electronic components to guarantee the machine service life.
3. 304 stainless steel, clean surface, easy to wash.





N-2000/Q 2000 tenderizing machine/ cutter



嫩化机/切片机

该机是参考国外设备研制而成的。肉块放入料斗后，由两组旋转齿形刀将其扎刺。本机可以使肌肉纤维束被破坏，经过活化的肉块，在腌制及滚揉的时候，可以更快、更多的吸收盐水及佐料，能够缩短加工时间，提高出品率。

the machine is developed in using the advantage of abroad advanced machine. after the feeding, the meat block will be pitched and cutted by two sets of rolling teeth-shap knives. the meat fiber will be broken. in this way, meat easily to absorb the brine and other materials. the tumbling procesa and bloating time will be great reduced. productivity rate will rise.

型号 (Model)	产量 (kg/h) Productivity	电源电压 (v) Voltage	功率 (kw) Power	刀间距 (mm) Space bettween knife	重量 (kg) Weight	外形尺寸 (mm) Dimension
N-2000/Q-2000	2000	380	1.5	6/3	288	800x620x750

SAUSAGE MOLD

肉模具

肉模具是生产培根、西式火腿，灌肠成型的辅助器具，外表经过特殊处理，美观大方、坚固耐用、容易清洗，多种规格可供选择。

The sausage mould is the assistant device for production of west-style ham and shaping the poured sausage, the appearance have been specially treated. If looks beautiful and easily clean. There are different type choose for you.

